



INSTALLATION INSTRUCTION

Instruction: 6720810

Product: BOBCAT BACKHOE

Subject: 843 Mounting Kit

Kit Number	6538145
------------	---------

MODEL	SERIAL NUMBER
811	

ESTIMATED INSTALLATION TIME: 2.5 HRS.*

*Approximate time only; actual time may vary.

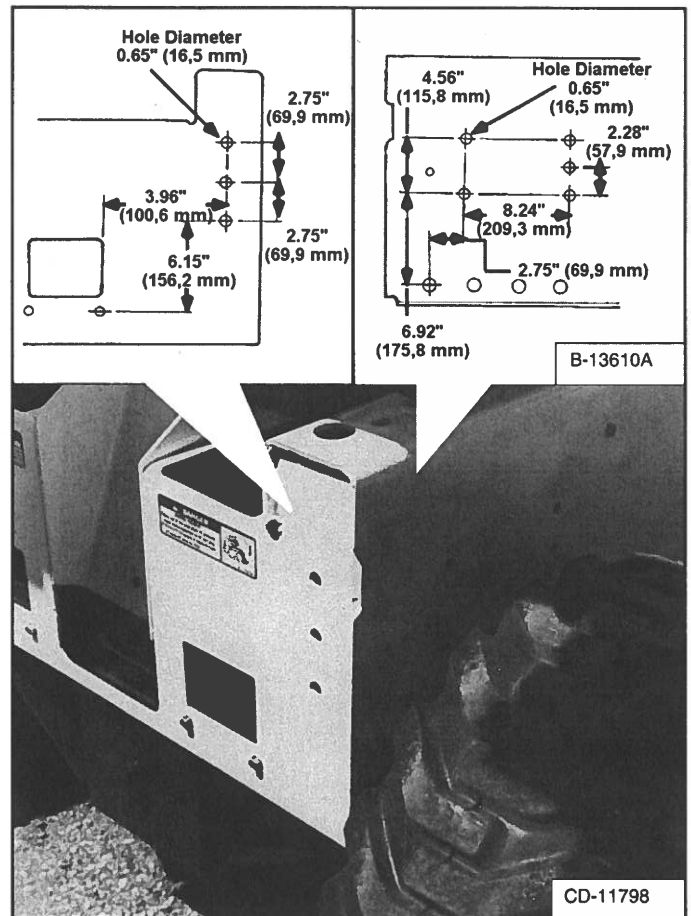
Read the instruction completely to become familiar with the procedures before beginning the installation.

This instruction may indicate procedures which are not fully explained in this instruction. See your Operation & Maintenance Manual or Service Manual for detailed instructions.

To install the 811 Backhoe Mounting Kit use the following procedure:

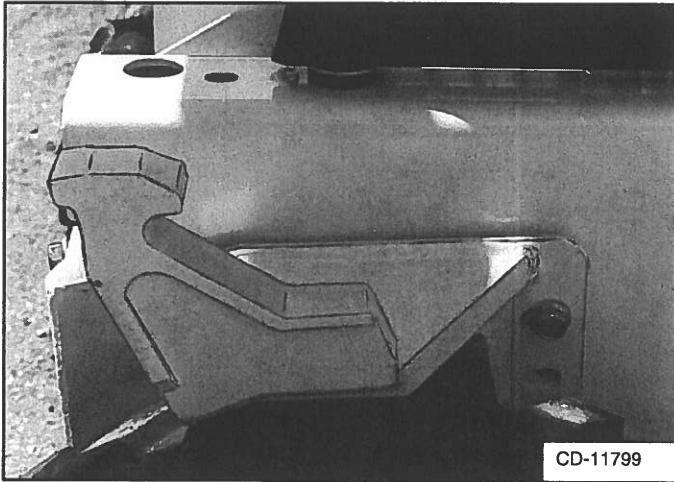
Early 843 loader: Remove the pedal lock linkage and side panel. (See the Service Manual for the correct procedure.)

Figure 1



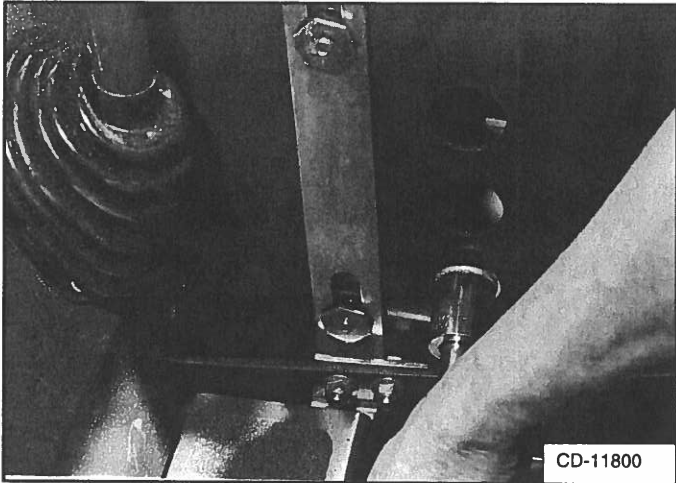
Early 843 loader: Locate and drill the holes for the 811 Backhoe mounting bracket as shown in figure [Figure 1].

Figure 2



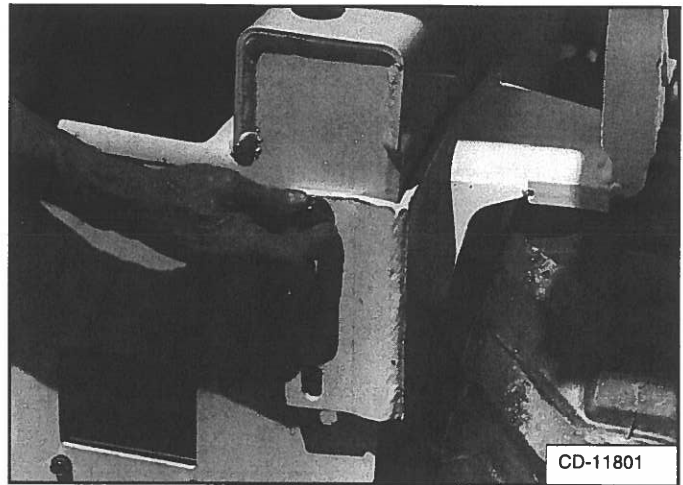
Install the backhoe mounting bracket on the main frame. Install the mounting bolts [Figure 2].

Figure 3



Use a socket and extension to install the nuts on the mounting bolts [Figure 3].

Figure 4



Install the mounting bolts into the front of the backhoe mounting bracket [Figure 4].

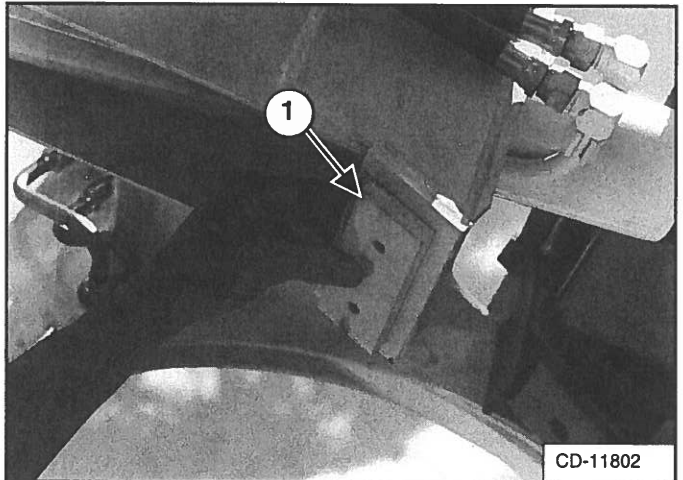
Install the nuts on the front mounting bolts. Tighten the bolts and nuts to 125-140 ft.-lbs. (170-190 Nm) torque.

Early 843 loader: Install the side panel. Install the pedal lock linkage. (See Service Manual for the correct installation.)

Repeat Steps 1 through 7 to install the mounting bracket on the other side of the loader.

Start the engine. Raise the lift arms and have a second person install a lift arm support device. (See Service Manual for the correct procedure.) Stop the engine.

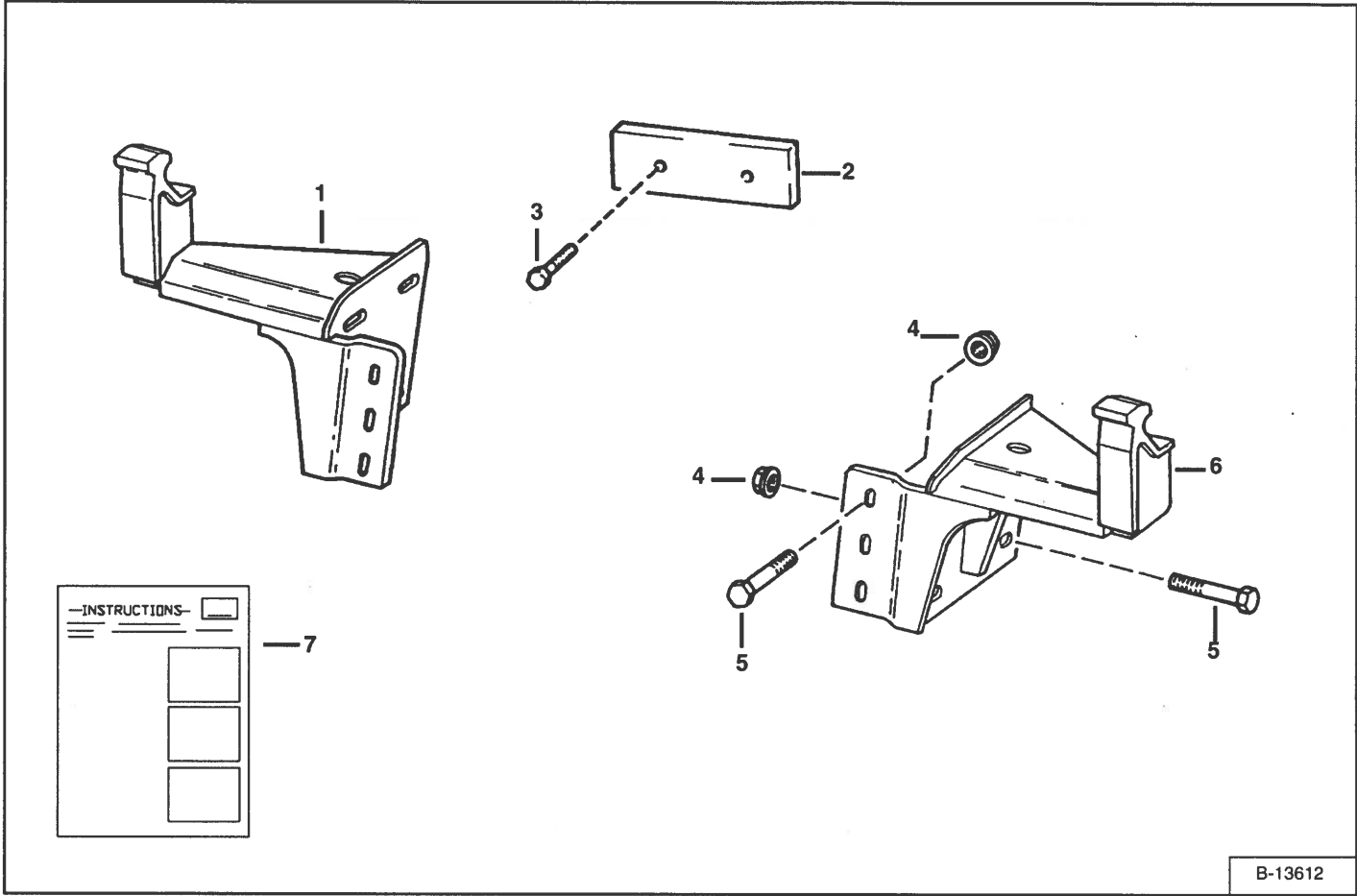
Figure 5



Install the stop and tighten the bolts (Item 1) [Figure 5].

Remove the lift arm support device and lower the lift arms.

CUSTOMER PACKING LIST



811 BACKHOE MOUNTING
(Kit # 6538145)

REF.	PART NO.	DESCRIPTION	QTY.
1	6538152	MOUNT (R.H.)	1
2	6537892	STOP	1
3	17C-614	BOLT	2
4	83D-10	NUT	16
5	31C-1028	BOLT	16
6	6538146	MOUNT (L.H.)	1
7	6720810	INSTRUCTIONS	1