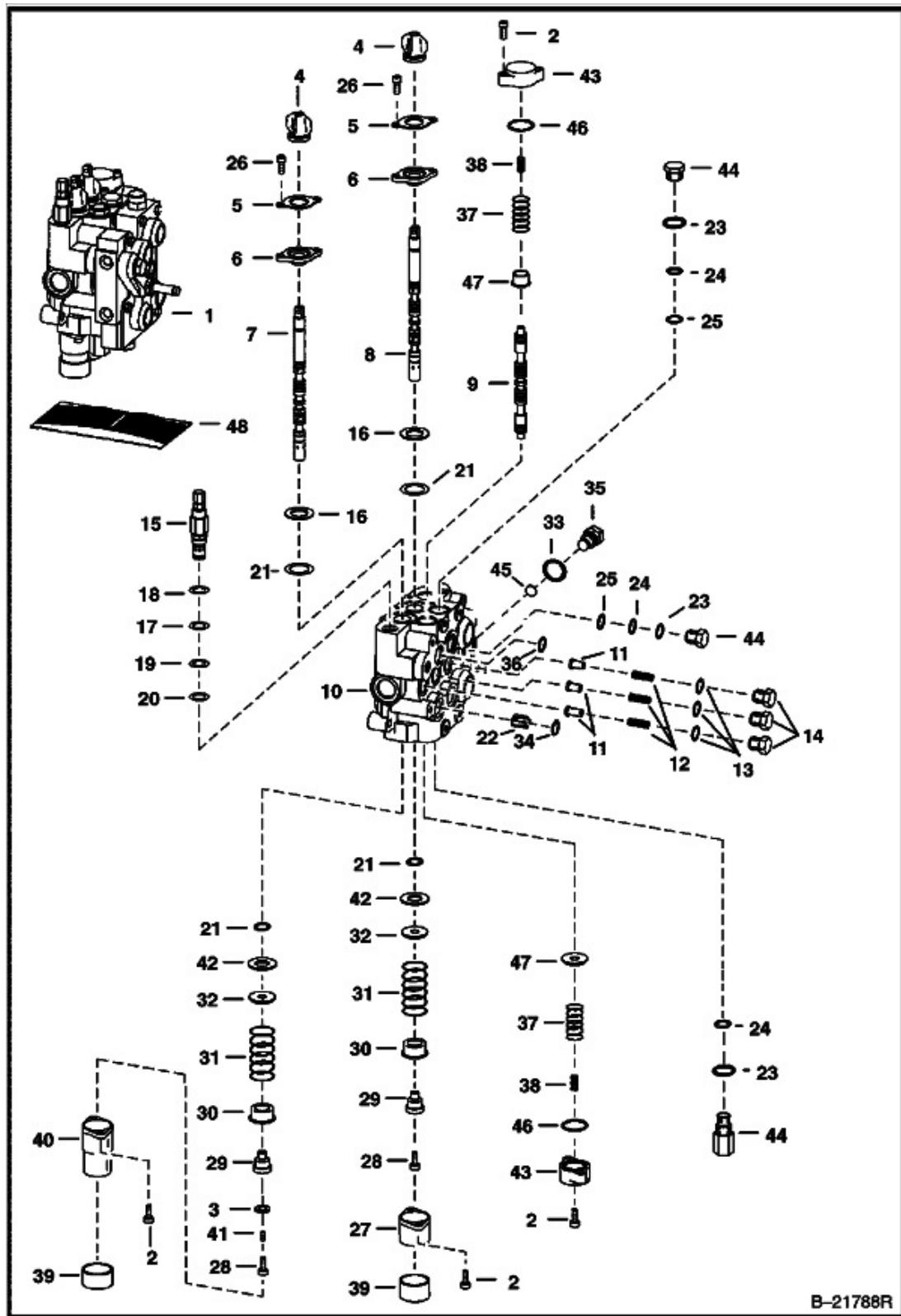


Title: Hydraulic Control Valve (Service Valve) (Advanced Control Systems)
Model: 773
Number:
Serial: 500K11001 & Above, 517611001 - 517624999, 518011001 & Above, 518111001 -
Number: 518114999, 519011001 - 519027999, 519211001 - 519214999



Title: Hydraulic Control Valve (Service Valve) (Advanced Control Systems)
Model: 773
Number:
Serial Number: 500K11001 & Above, 517611001 - 517624999, 518011001 & Above, 518111001 - 518114999, 519011001 - 519027999, 519211001 - 519214999

Ref.	Part Number	Description	S/N	Qty
1		VALVE, CONTROL SERVICE, VALVE, CONTROL SERVICE, - NLA - valve is minus all fittings, relief valves, anti-cavitation valves, solenoid coils & solenoid spools - remove & use existing parts from old valve or order new parts as needed - Was 6815690, A		1
1		BODY, BODY, - NSS - BICS CONTROL - WAS 6628571, D		1
2	29G416	BOLT		8
3	54K20002	O-RING		1
4	6587763	BOOT		2
5	6589564	RETAINER		2
6	6589565	SEAL, seal		2
7		SPOOL, SPOOL, NLA - Lift - #1 Or Red - Order 7108251 - Was 6677660, A		1
7		SPOOL, SPOOL, NLA - Lift - #2 Or Green - Order 7108251 - Was 6677661, A		1
7	7108251	SPOOL, LIFT, Was 7101151, A		1
8		SPOOL, SPOOL, NLA - tilt - # 1 or Red - Order 7108242 - Was 6677662, A		1
8		SPOOL, SPOOL, NLA - tilt - # 2 or Green - Order 7108242 - Was 6677663, A		1
8	7108242	SPOOL, TILT		1
9	7300937	SPOOL AUX, auxiliary - Was 6588074		3
10		BODY, BODY, NSS		1
11	6592115	SEAT, load check		3
12	6592117	SPRING LOAD CHECK		3
13	79K8	O-RING		3
14	6592116	NUT, load check		3
15		VALVE, VALVE, NLA - Main Relief - W/Ref. 17-20 - Pressure Preset At Factory - Was 6676195, A		1

Title: Hydraulic Control Valve (Service Valve) (Advanced Control Systems)
 Model Number: 773
 Serial Number: 500K11001 & Above, 517611001 - 517624999, 518011001 & Above, 518111001 - 518114999, 519011001 - 519027999, 519211001 - 519214999

Ref.	Part Number	Description	S/ N	Qty
15	7219324	VALVE, RELIEF, W/ O-rings - pressure to be set in field - Was 6686360, A		1
16	1K127	O-RING, NLA - Was 93K127, A		2
16	7418836	O-RING, Was 1K127		2
17	58K017	O-RING		1
18	6665569	RING BACK-UP, back-up		1
19	25K20016	O-RING		1
20	6665570	CLYD RING, glide		1
21	6683274	SEAL, SPOOL 10, - spool - Was 6665846, A		4
22	6534630	RESTRICTOR, .134/.141		1
23	79K10	O-RING		2
24	73K014	RING BACK-UP 5, Was 80K14, B		5
25	58K014	O-RING, back-up washer required		5
25	6677106	O-RING, back-up washer not required		5
26	29G412	BOLT		4
27	7101345	BONNET, DETENT HYD VALVE, Was 6587633, A		1
28	7102652	SCREW, Was 30G000416B, B		2
29	6592109	ADAPTER		1
30	6592100	COLLAR		2
31	6587580	SPRING		2
32	7211397	WASHER, SPRING, Was 6587523, A		2
33	79K7	O-RING		x
34	55K212	O-RING		4
35	6806561	PLUG W/SEALS, W/Ref. 33 & 48 - Hex Head		1
36	55K204	O-RING		1

Title: Hydraulic Control Valve (Service Valve) (Advanced Control Systems)
 Model Number: 773
 Serial Number: 500K11001 & Above, 517611001 - 517624999, 518011001 & Above, 518111001 - 518114999, 519011001 - 519027999, 519211001 - 519214999

Ref.	Part Number	Description	S/ N	Qty
37	6596332	SPRING		2
38	6806007	SPRING, blue		2
39	6662848	CAP		1
40	6803092	BONNET, .625" flange		1
41	6801167	SPOOLPLUG, plastic - 0.69" long		1
42	6595663	BUSHING		2
43	6588781	END CAP		2
44	6592720	PLUG, W/ Ref. 23-25		5
45	25K20012	O-RING		1
46	58K124	O-RING		2
47	7108780	SLEEVE, Was 6595951, A		2
48	6816250	KIT SEAL, One Spool - Ref. 2, 3, 4, 16, 21 & 26 - Was 6803605, A		x
48	6632279	KIT SEAL, main relief - Ref. 17-20 - main relief		x
48	6809425	KIT SEAL, Ref. 13 & 23-25		x
48	6816253	KIT SEAL, complete - Ref. 2, 4, 13, 16-21, 23-26, 34, 36, 42, 45, 46, 55 & 56 - Was 6809448, A		x