



# INSTALLATION INSTRUCTION

Instruction: 6902798

Product: BOBCAT LOADER

Subject: BACKHOE MOUNTING KIT

Kit Number	7101325
------------	---------

MODEL	SERIAL NUMBER
S150	523811001 & Above 523911001 & Above 526611001 & Above 526711001 & Above
S160	524011001 & Above 524111001 & Above 526811001 & Above 526911001 & Above

**ESTIMATED INSTALLATION TIME: 1 HRS\***

**\* Approximate time only; actual time may vary.**

**Read this instruction completely to become familiar with the procedures before beginning the installation.**

**To avoid duplication, instructions may refer you to the Operation & Maintenance Manual or the Service Manual for more detailed instructions.**

Use the following procedure to install the backhoe mounting kit.

Install jackstands under the rear corners of the loader. (Refer to the Service Manual for the correct procedure.)



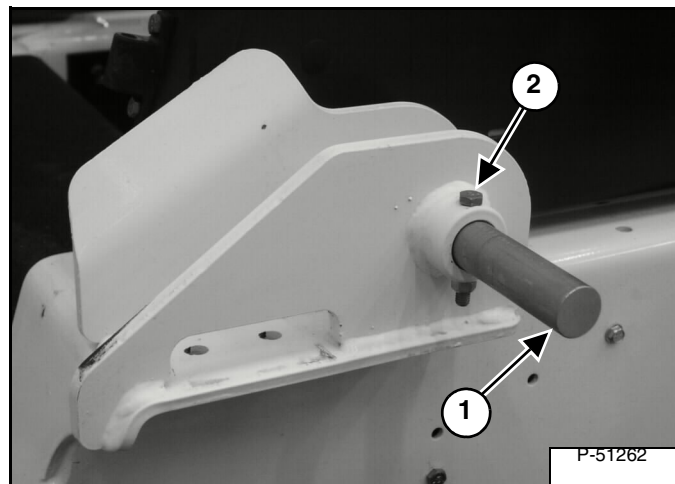
## WARNING

**Before the cab or the lift arms are raised for service, jackstands must be put under the rear corners of the frame. Failure to use jackstands can allow the machine to tip backward causing injury or death.**

W-2014-0895

Raise the lift arms. (Refer to the Operation & Maintenance Manual or the Service Manual for the correct procedure.)

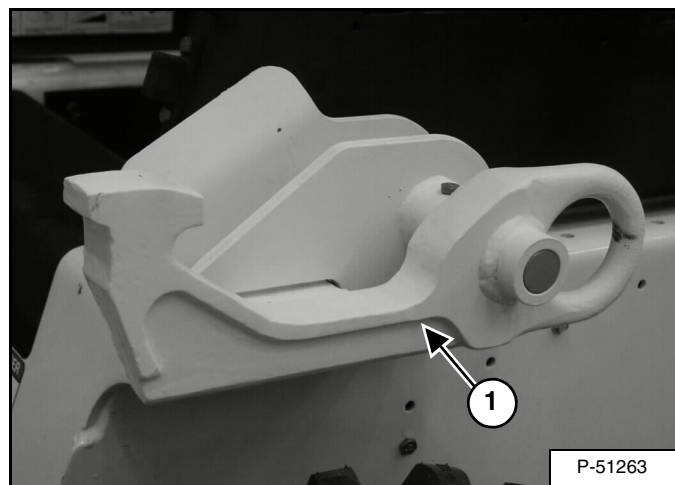
Figure 1



Install the pin (Item 1) [Figure 1], supplied in the kit, into the frame boss. The tapered end of the pin will go into the boss.

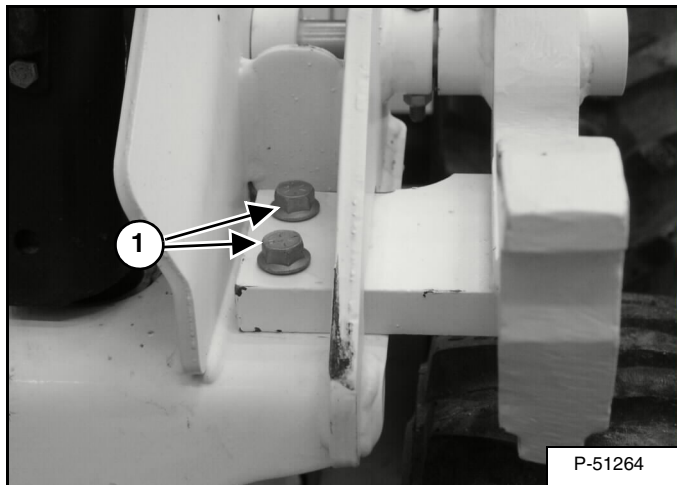
Install the bolt (Item 2) [Figure 1] through the pin. Install and tighten the nut to 18-20 ft.-lbs. (24-27 Nm) torque.

Figure 2



Position the backhoe mounting bracket (Item 1) [Figure 2] onto the pin and through the slotted hole in the side of the loader frame.

**Figure 3**



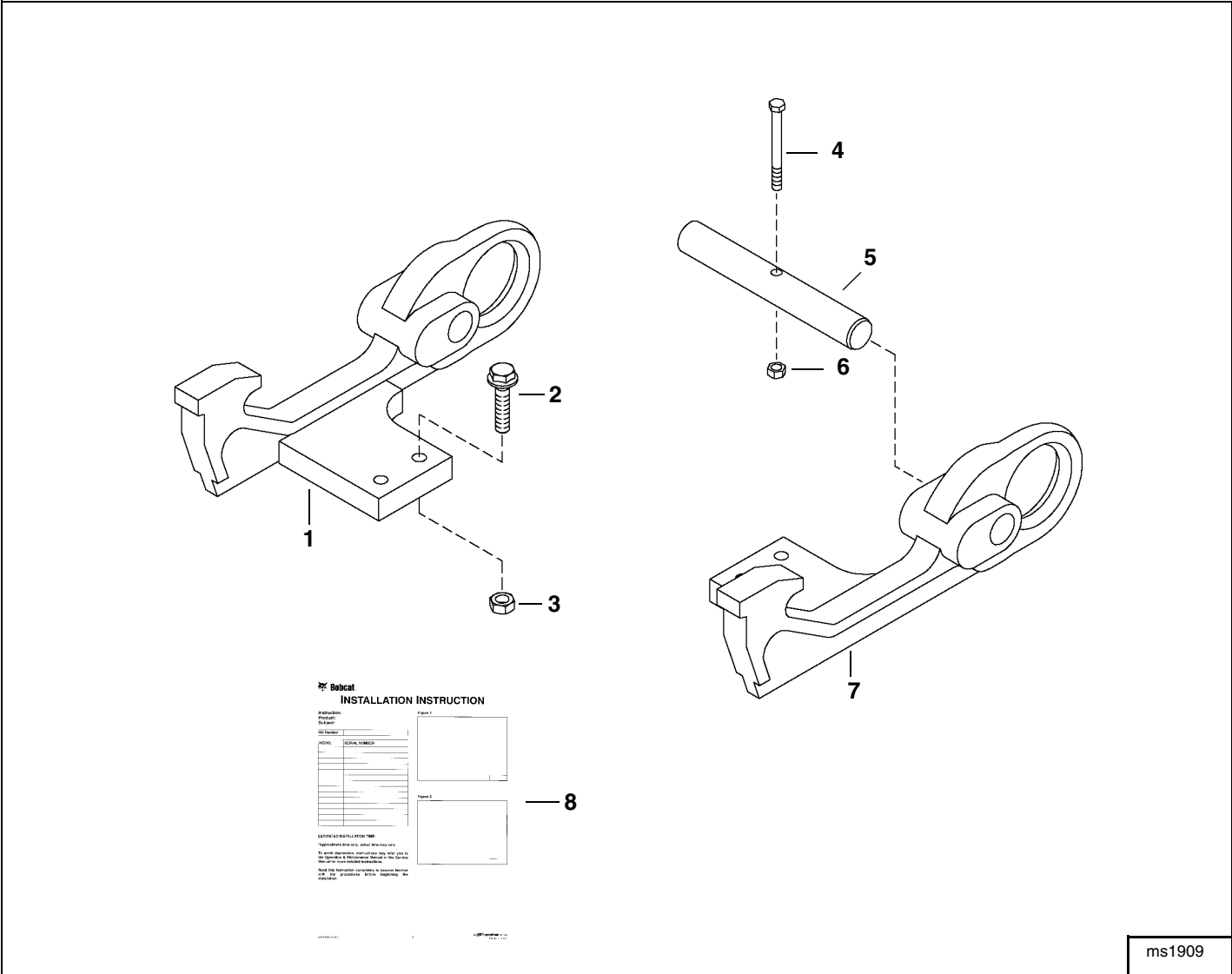
Install the two bolts (Item 1) **[Figure 3]** through the backhoe mounting bracket from the top. Install the nuts on the bottom side of the fender. Tighten the nuts to 90 ft.-lbs. (125 Nm) torque.

Repeat this procedure and install the other backhoe mounting bracket on the opposite side of the loader.

Lower the lift arms. (Refer to the Service Manual for the correct procedure.)

Lower the lift arms fully.

CUSTOMER PACKING LIST



(Kit #7101325) Backhoe Mounting Kit

Ref.	Part No.	Description	Qty.
1	7101399	HOOK, right	1
2	31C-836	SCREW	4
3	63D-8	NUT	4
4	17C-640	SCREW	2
5	6717707	PIN	2
6	85D-6	NUT	2
7	7101400	HOOK, left	1
8	6902798	INSTRUCTION	1