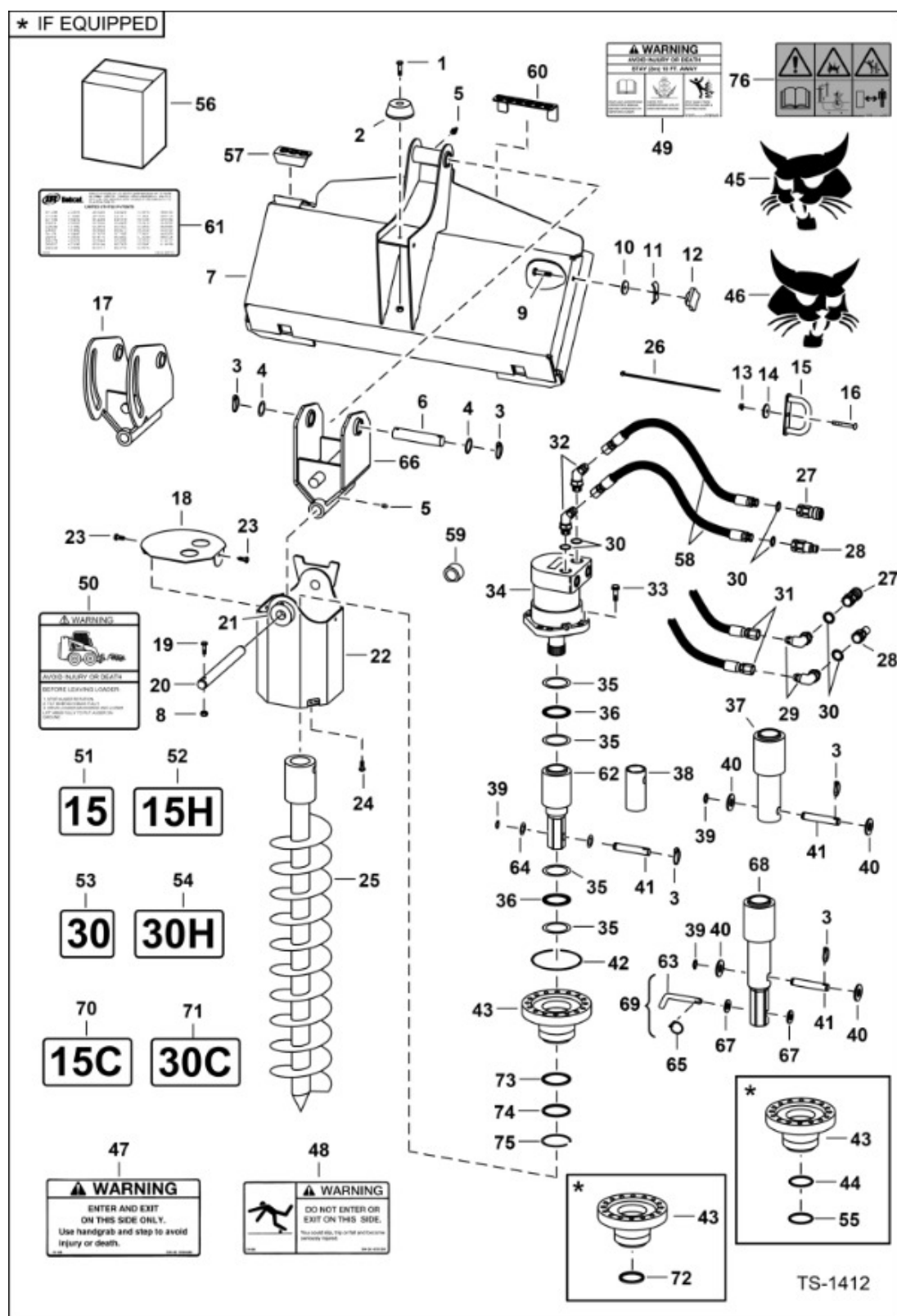


Title: Auger (15) (15C) (15H) (30) (30C) (30H)

Model Number: Auger

Serial Number: Loader



Title: Auger (15) (15C) (15H) (30) (30C) (30H)

Model Number: Auger

Serial Number: Loader

Ref #	Part #	Description	S/N	Qty
1	17C620	BOLT		1
2	6562109	STOP SWING		1
3	6560382	PIN, LOCK		3
4	6534111	WASHER, 5		2
5	10H25	FITTING GREASE		2
6	6709675	PIN		1
7		MOUNT, MOUNT, NSS - Bob-Tach - Order 6812980 mount assy from Gwinner SALES - Includes mounting hardware and decals - Was 6709656, A		1
8	61D6	NUT HEX		2
9	7107210	BOLT, Was 7C000640B, B		1
10	7D6	NUT JAM		1
11	6502426	CLAMP		1
12	6670536	KNOB, Was 6647668, A		1
13	85D6	NUT LOCK		1
14	872229	WASHER		1
15	6706160	GUIDE, HOSE ASSY		1
16	37C648	BOLT		1
16	37C656	BOLT		1
16	37C664	BOLT		1
17	6709662	BRACKET PIVOT, pivot - pin on - for excavators		1
18	6711646	COVER, motor - used with 157-0009-003 or 157-0010-003 motors		1
18	7163574	COVER, MOTOR, Use with 157-0009-005 or 157-0010-005 motors		1
19	17C656	BOLT		1

Title: Auger (15) (15C) (15H) (30) (30C) (30H)

Model Number: Auger

Serial Number: Loader

Ref #	Part #	Description	S/N	Qty
20	6709674	PIN		1
21	6703030	BUSHING, weld-on		2
22	6709668	MOUNT, MOTOR ASSY, motor		1
23	84G3712	SCREW THD ROLLING TT		2
24	17C828	BOLT		8
25		AUGER BIT, AUGER BIT		1
26	6624289	STRAP, TIE		3
27	7246790	COUPLER FF FEM 1/2, - straight - Was 6672960, A		1
27	7246790EF	COUPLER FF FEMALE 1/2 BDY 3/4 SAE THREAD		1
28	7246777	COUPLER, FF MALE, Was 6674688, A		1
28	7246777EF	COUPLER FF CONN UNDER PRESS 1/2-3/4 SAE		1
28		SEAL, SEAL, - blue - front - 7251807 or 6679841		1
29	17K8	FITTING, W/Ref. 30 - flat boss face		2
30	79K12	O-RING, flat boss face		4
30	99K12	O-RING, tapered boss face		4
31	6714882	HOSE, Use with 90 degrees elbows - Was 6711966, A		2
32	18K8	FITTING HYDRAULIC ELBOW 45, flat boss face - W/Ref. 30		2
32		ELBOW, ELBOW, NLA - tapered boss face - W/Ref. 30 - Was 18KV00008B, A		2
32	97K12	O-RING, flared end		2
32	18KB1212	FITTING, HYD ELBOW, W/Ref. 30 - flat boss face		2
33	93G832	BOLT		8
34	6667866	MOTOR, model 15, 15H & 15C		1
34	6667867	MOTOR, model 30, 30H & 30C		1

Title: Auger (15) (15C) (15H) (30) (30C) (30H)

Model Number: Auger

Serial Number: Loader

Ref #	Part #	Description	S/N	Qty
35	6668769	WASHER		4
36	6668770	BEARING		2
37		SHAFT, SHAFT, NSS - round auger - Order Ref. 68 combination shaft - Was 6711619, A		1
38	7137091	ADAPTER, converts hex shaft to round - Was 6711904, A		1
39	6534668	RING SNAP		1
40	27E14	WASHER 5		2
41	6711887	PIN, AUGER, .87" dia. x 4.93" long		1
42	58K259	O-RING, Was 25K040608B, B		1
43		HOUSING, HOUSING, NLA - with .210" wide seal groove - Order 7174785 housing and 7009143 seal - Was 6711242, A	944229152 & Below, 944513777 & Below, A7ER00434 & Below, A90L00337 & Below	
43		HOUSING, AUGER, HOUSING, AUGER, NLA - W/ .425" wide seal groove - Order 7357428 housing - Was 7174785, A	944229153 - 944262213, 944513778 - 944532364, A7ER00435 - A7ER03553, A90L00338 - A90L03333	
43	7357428	HOUSING AUGER, Also Order Ref. 73-75	944262214 & Above, 944532365 & Above, A7ER03554 & Above, A90L03334 & Above	

Title: Auger (15) (15C) (15H) (30) (30C) (30H)

Model Number: Auger

Serial Number: Loader

Ref #	Part #	Description	S/N	Qty
44	54K40224	O-RING, Use W/housing W/ .210" wide seal groove - also order Ref. 55	944229152 & Below, 944513777 & Below, A7ER00434 & Below, A90L00337 & Below	
45	6809229	DECAL LOGO BOBCAT, LH - Was 6567987, A		1
46	6809228	DECAL LOGO BOBCAT, RH - Was 6567988, A		1
46	6809228	DECAL LOGO BOBCAT, RH & LH		2
47	6594488	DECAL WARNING, enter/exit		2
48	6701391	DECAL EXIT, 139,7 mm x 70 mm (5.5" x 2.75")		2
48	7242292	DECAL, EXIT, 114,3 mm x 57,2 mm (4.5" x 2.25")		2
49	6711884	DECAL WARNING, NLA - Order Ref. 76		2
50	6711885	DECAL, warning		1
51	6711892	DECAL, 15		1
52	7145344	DECAL, 15H - Was 6711893, A		1
53	6711894	DECAL, 30		1
54	6711895	DECAL, 30H		1
55	73K232	RING BACK-UP, backup - Use with housing with .210" wide seal groove	944513777 & Below, 944229152 & Below, A7ER00434 & Below, A90L00337 & Below	
56	6716745AR	KIT, DECAL, decal - spanish (argentina)		1
56	6716745BR	KIT, DECAL, decal - portugese (brazil)		1

Title: Auger (15) (15C) (15H) (30) (30C) (30H)

Model Number: Auger

Serial Number: Loader

Ref #	Part #	Description	S/N	Qty
56	6716745JP	KIT, DECAL, decal - japanese		1
56	6716748AR	KIT, DECAL, decal - for auger mounting bracket - spanish (argentina)		1
56	6716748BR	KIT, DECAL, decal - for auger mounting bracket - portugese (brazil)		1
56	6716748JP	KIT, DECAL, decal - japanese		1
56	6716754AR	KIT, TRANSLATION, translation - spanish (argentina)		1
56	6716754BR	KIT, TRANSLATION, translation - portugese (brazil)		1
56	6716749AR	KIT, TRANSLATION, translation - for auger mounting bracket - spanish (argentina)		1
56	6716749BR	KIT, TRANSLATION, translation - for auger mounting bracket - portugese (brazil)		1
56	6809732AR	KIT, TRANSLATION, translation - for 15C & 30C auger - spanish (argentina)		1
56	6809732BR	KIT, TRANSLATION, translation - for 15C & 30C auger - portugese (brazil)		1
57	6805660	STEP		1
58	6806190	HOSE HYD ASSY W/GUARD		2
59	6809272	BUSHING		1
60	6716014	STEP		2
61		DECAL, DECAL, NLA - patent - Was 6557224, C		1
62	7193561	SHAFT, DRIVE AUGER, hex - for model 15H & 30H auger - Was 7138166, A		1
63	6809735	PIN, .625" dia. - Use W/ hex shaft		1
64	27E10	WASHER		1
65	6649706	PIN, LOCK, lynch		1
66	6812766	COUPLER, AUGER FRAME W/A, for excavators W/ exchange and loaders - Was 6714382, A		1

Title: Auger (15) (15C) (15H) (30) (30C) (30H)

Model Number: Auger

Serial Number: Loader

Ref #	Part #	Description	S/N	Qty
67	27E10	WASHER, Was 27E000012B, A		2
68	7178300	SHAFT, DRIVE AUGER, combination - Was 6815086, A		1
69	6809733	KIT AUGER HEX, hex auger hardware - Ref. 63, 65 & 67		1
70	6809230	DECAL, 15C		1
71	6809231	DECAL, 30C		1
72	7009143	SEAL, Use with 7174785 housing with .425" wide seal groove	944229153 - 944262213, 944513778 - 944532364, A7ER00435 - A7ER03553, A90L00338 - A90L03333	
73	7356651	SEAL O-RING, Use W/ 7357428 housing		1
74	7356652	SEAL WIPER, Use W/ 7357428 housing		1
75	7356653	RING SNAP, Use W/ 7357428 housing		1
76	7130147	DECAL WARNING		2